



Subject Property

TBD Wisner Parkway

Parcel #111882013292003, Kennewick, WA 99338
MLS 275371

Contact

Kirt Shaffer | 509.521.9183
kirt@tippettcompany.com

SUMMARY

4.19 acre light industrial lot located less than a mile from the I-82 interchange. Seller is willing to sub-divide the property up to three lots. Pricing will vary based on the size and configurations of lots.

Nearby businesses include Connell Oil, Inc., Amos Construction, Tri-Cities Automotive Repair, Pacific Pride, and Cottonwood Self Storage.

SUMMARY

\$1,460,000.00

4.19 Acres / 182,516.4 sf

ADDRESS

TBD Wiser Parkway
Kennewick, WA 99338

CONTACT

Kirt Shaffer
Office 509.545.3355
Mobile 509.521.9183
kirt@tippettcompany.com
2815 St, Andrews Loop, Suite F
Pasco, WA 99301

ZONING

Light Industrial

UTILITIES

Water, sewer and power accessible

TAX PARCEL

#111882013292003

LINKS

Municipal

<https://www.go2kennewick.com/>

<https://www.co.benton.wa.us/>

Economic Development

<https://portofbenton.com/>

<https://www.tridec.org/>

DEMOGRAPHICS

CITY, STATE

Kennewick, WA

POPULATION

44,083

AVG. HH SIZE

2.68

MEDIAN HH INCOME

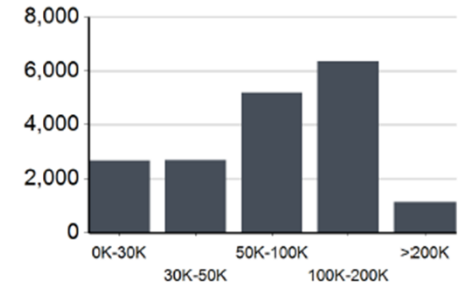
\$85,154

HOME OWNERSHIP

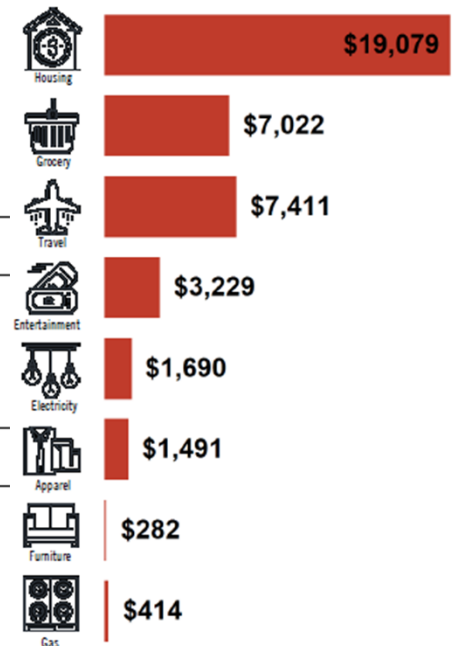
Renters: **4,455**

Owners: **12,381**

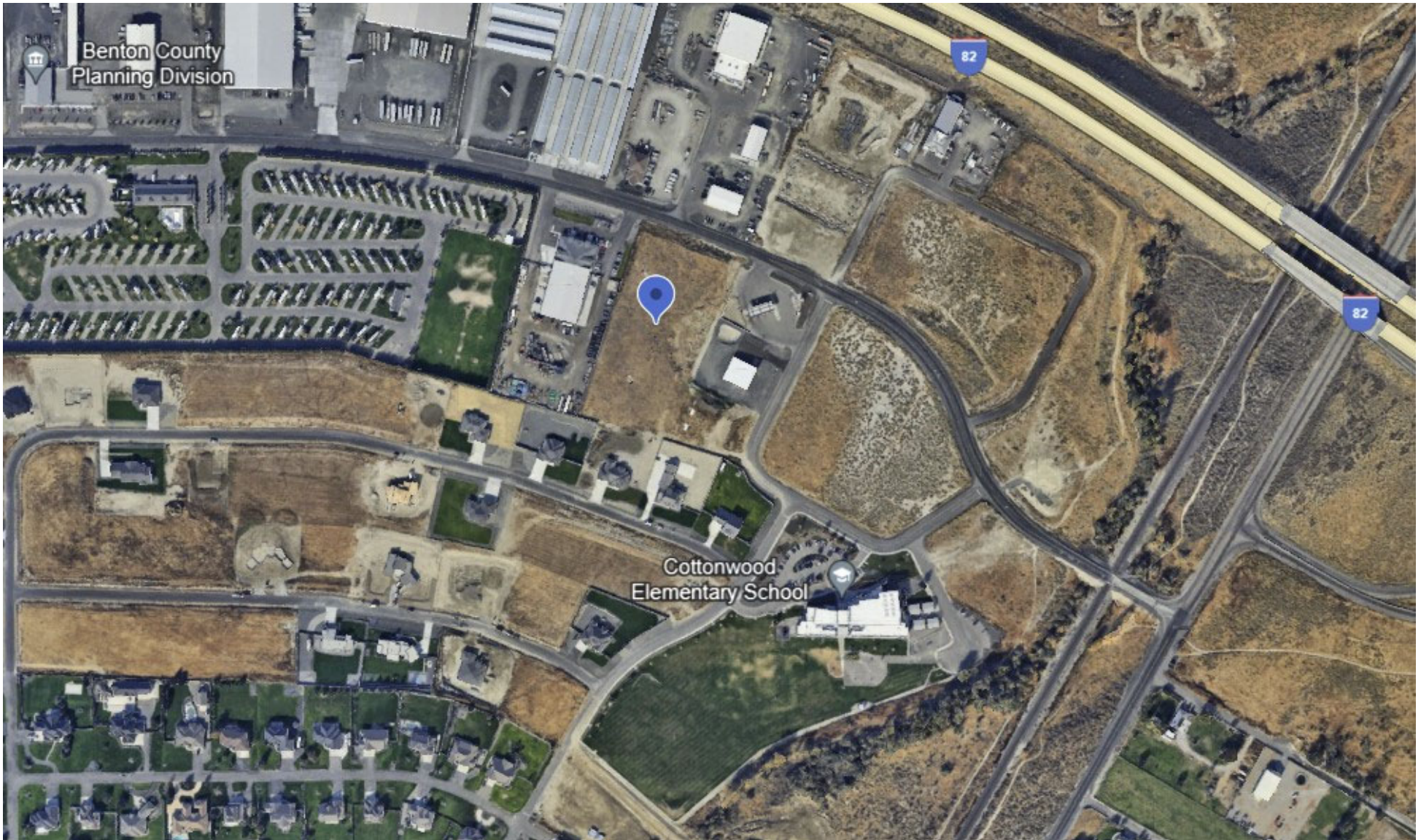
INCOME BY HOUSEHOLD



HH SPENDING



LOCATION MAP



No warranty or representation, expressed or implied, is made as to the accuracy of information contained herein, and same is submitted subject to errors, omission, change of price, rental or other conditions and withdrawal without notice. Purchaser and his/her agent are responsible for independently verifying all presented information.

AERIAL VIEW



No warranty or representation, expressed or implied, is made as to the accuracy of information contained herein, and same is submitted subject to errors, omission, change of price, rental or other conditions and withdrawal without notice. Purchaser and his/her agent are responsible for independently verifying all presented information.