



4806 W Van Giesen St,

West Richland, WA 99353 / Benton

MLS # 267631

Contact

Priscely G. de Campos

509.591.5676

priscely@tippettcompany.com

SUMMARY

Plant your business in the heart of West Richland! Zoned Commercial General. High traffic count of 4,700 per day.

Landlord offers \$20,000.00 towards tenant improvements.

30 parking spaces including a couple of designated handicap spaces.

Would make a great location for a daycare, office suites, or retail business.

PRICE

\$5,600 / Month Gross

3,200 SF
.76 Acres

ADDRESS

4806 W Van Giesen St, West Richland 99352

CONTACT

Priscely G. de Campos
Cell: 509.591.5676
Office: 509.545.3355
priscely@tippettcompany.com
2815 St, Andrews Loop, Suite F
Pasco, WA 99301

ZONING

Commercial General

UTILITIES

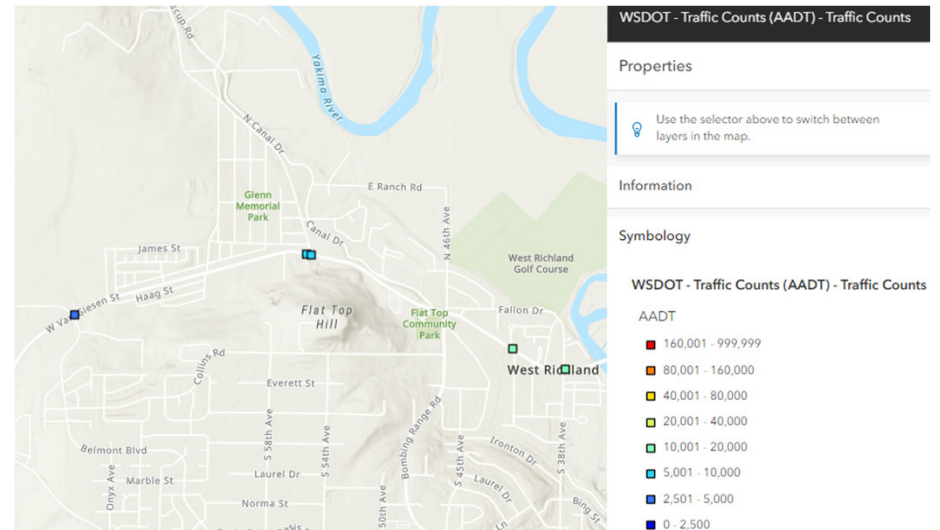
Water: West Richland Utilities

Electrical: Benton Rural Electric Association

TAX PARCEL

131084011726003

TRAFFIC COUNTS



LINKS

Municipal

<https://www.co.benton.wa.us/>

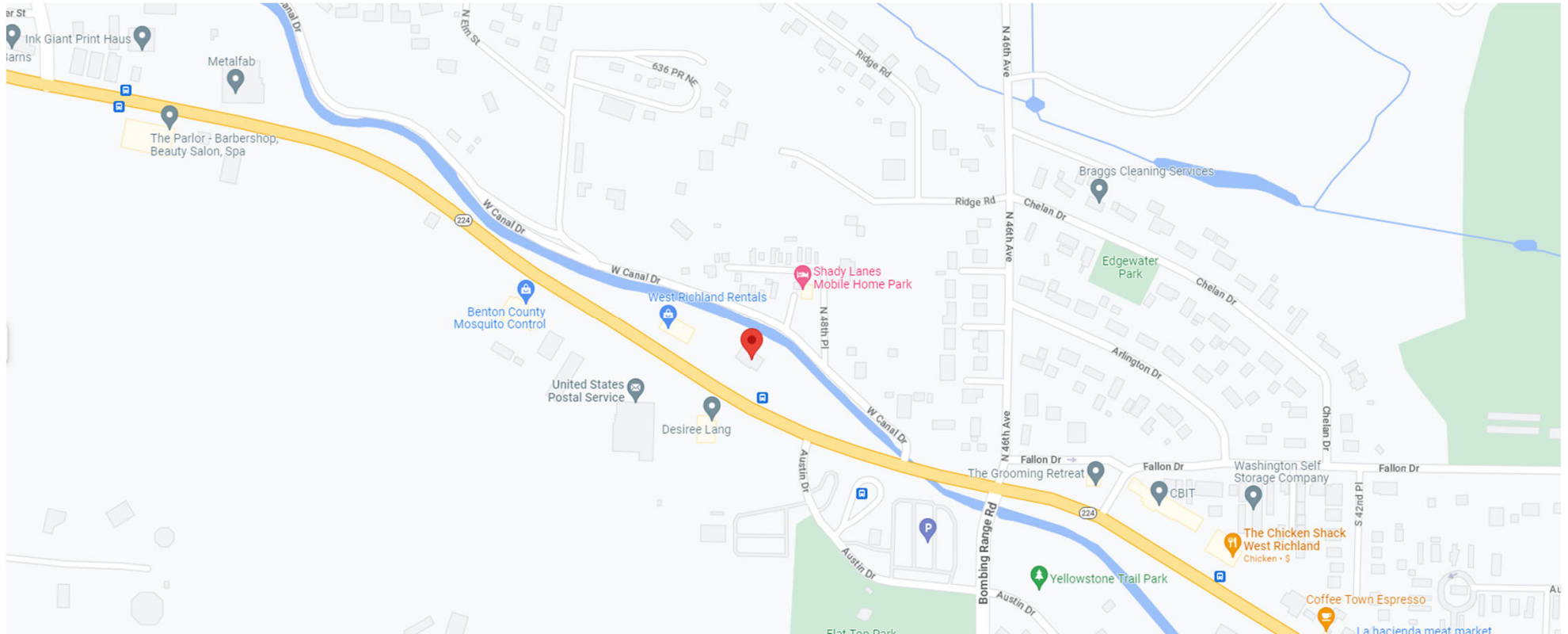
<https://www.westrichland.org/CivicAlerts.aspx?CID=1>

Economic Development

<https://portofbenton.com/>

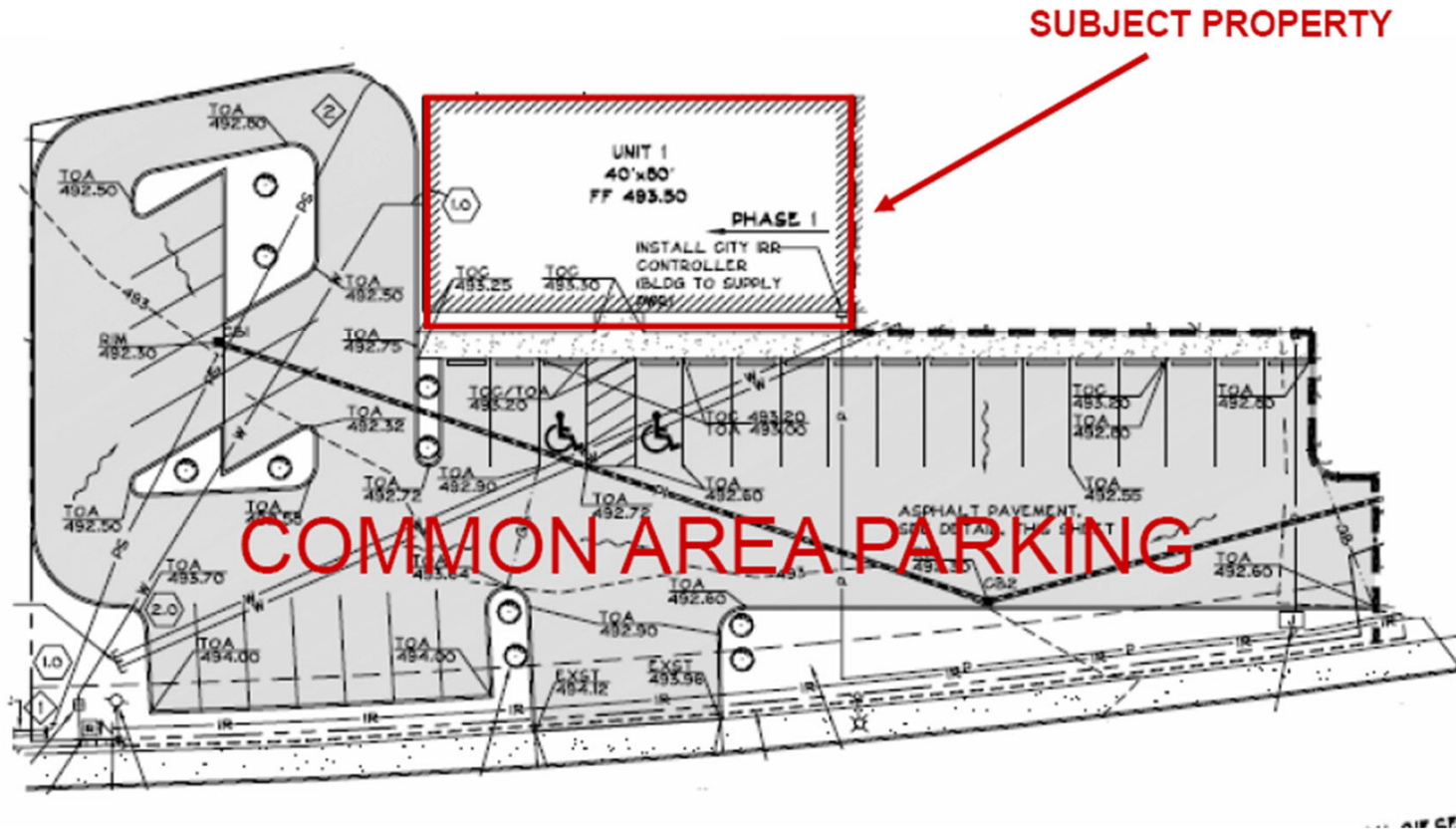
<https://www.tridec.org/>

LOCATION MAP



No warranty or representation, expressed or implied, is made as to the accuracy of information contained herein, and same is submitted subject to errors, omission, change of price, rental or other conditions and withdrawal without notice. Purchaser and his/her agent are responsible for independently verifying all presented information.

AERIAL VIEW



No warranty or representation, expressed or implied, is made as to the accuracy of information contained herein, and same is submitted subject to errors, omission, change of price, rental or other conditions and withdrawal without notice. Purchaser and his/her agent are responsible for independently verifying all presented information.