



1935 E Superior St, Ste D

Pasco, WA /Franklin County
MLS 255826

Contact

Kirt Shaffer | 509.521.9183
kirt@tippettcompany.com



SUMMARY

This offering is for a shop/warehouse. The space is 6,000 RSF including office and warehouse space. Warehouse is built with 20' clear-span, 3-phase power, and 16 ft grade-level doors. The landlord is willing to build out the office area space.

ZONING

C-3 General Business District

TAX PARCEL

Lot 113-474-027 1.27 AC | 55,466 SF

FOR LEASE

6,000 RSF

Warehouse	\$1.00/SF
Office	\$1.55/SF
NNN	\$0.10/SF

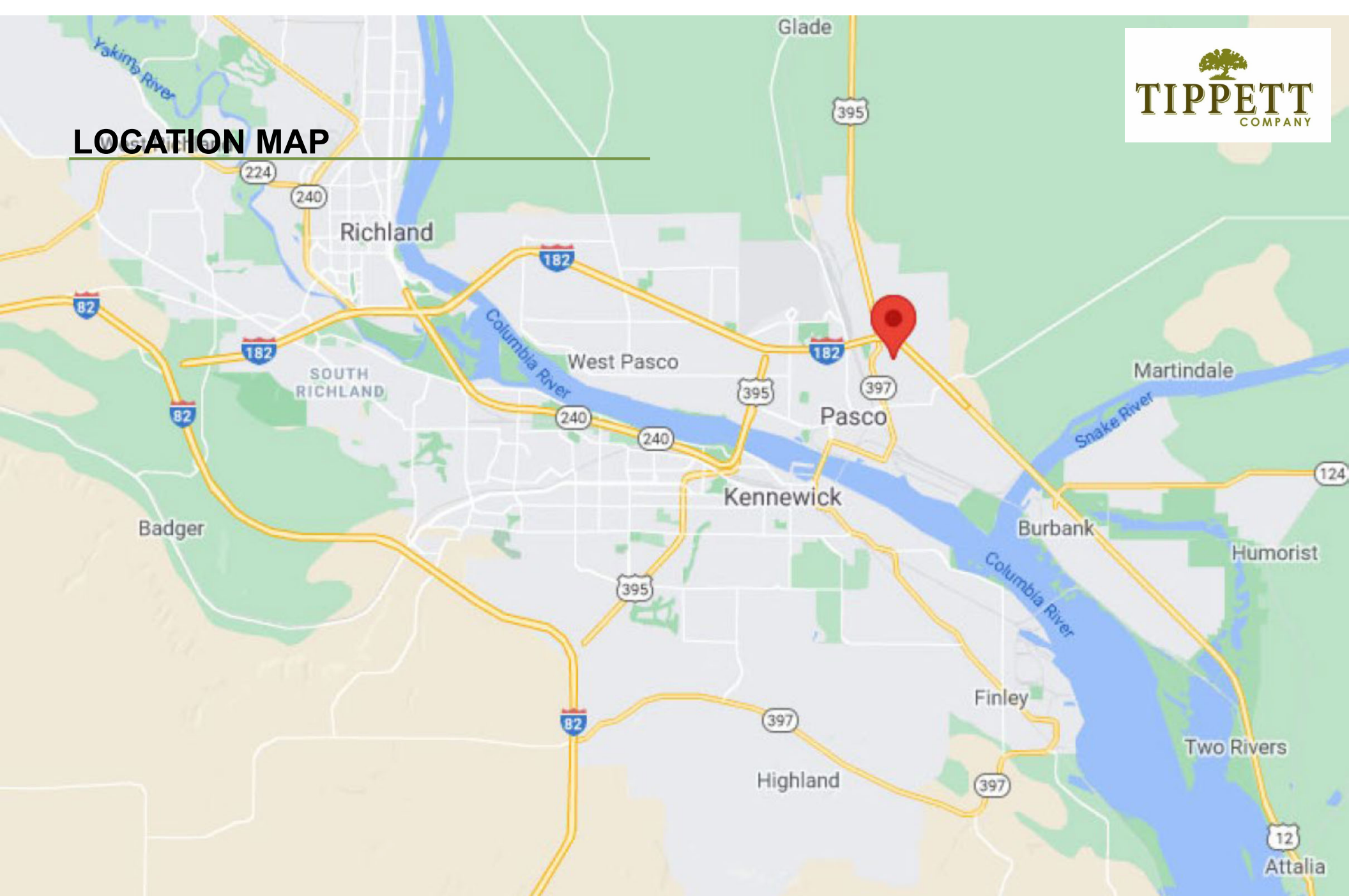
ADDRESS

1935 E Superior Street, Suite D
Pasco, WA 99301

CONTACT

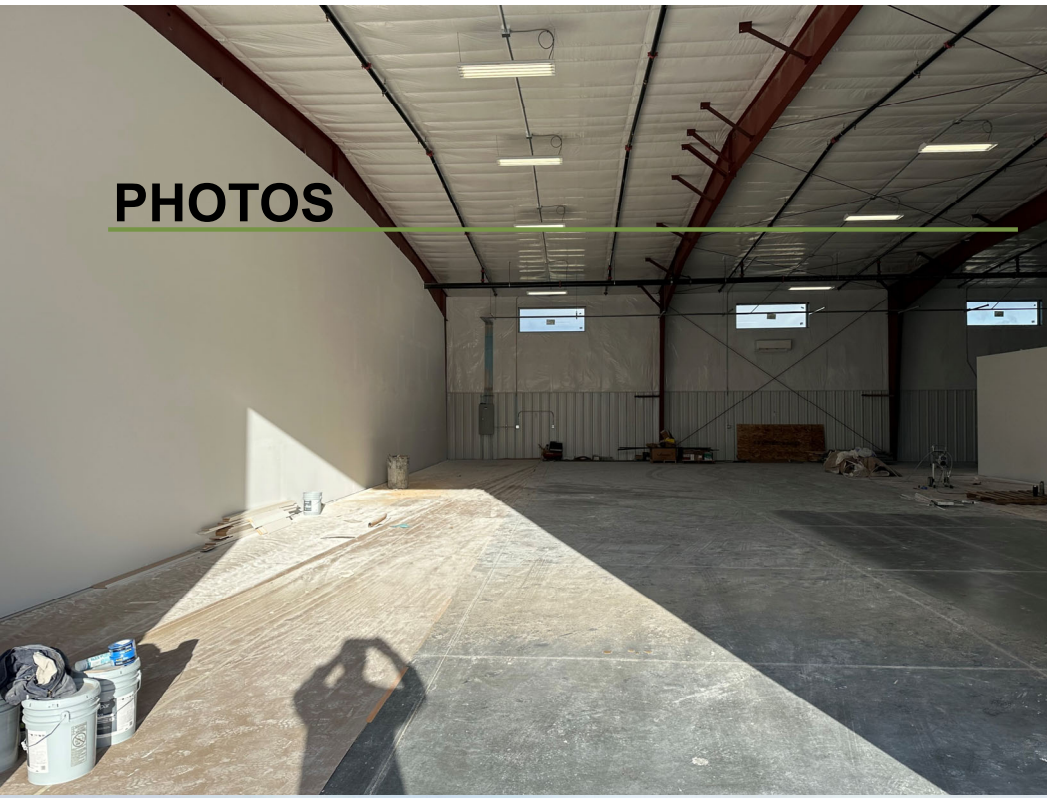
Kirt Shaffer
Mobile 509.521.9183
Office 509.545.3355
kirt@tippetcompany.com
2815 St, Andrews Loop, Suite F
Pasco, WA 99301

LOCATION MAP



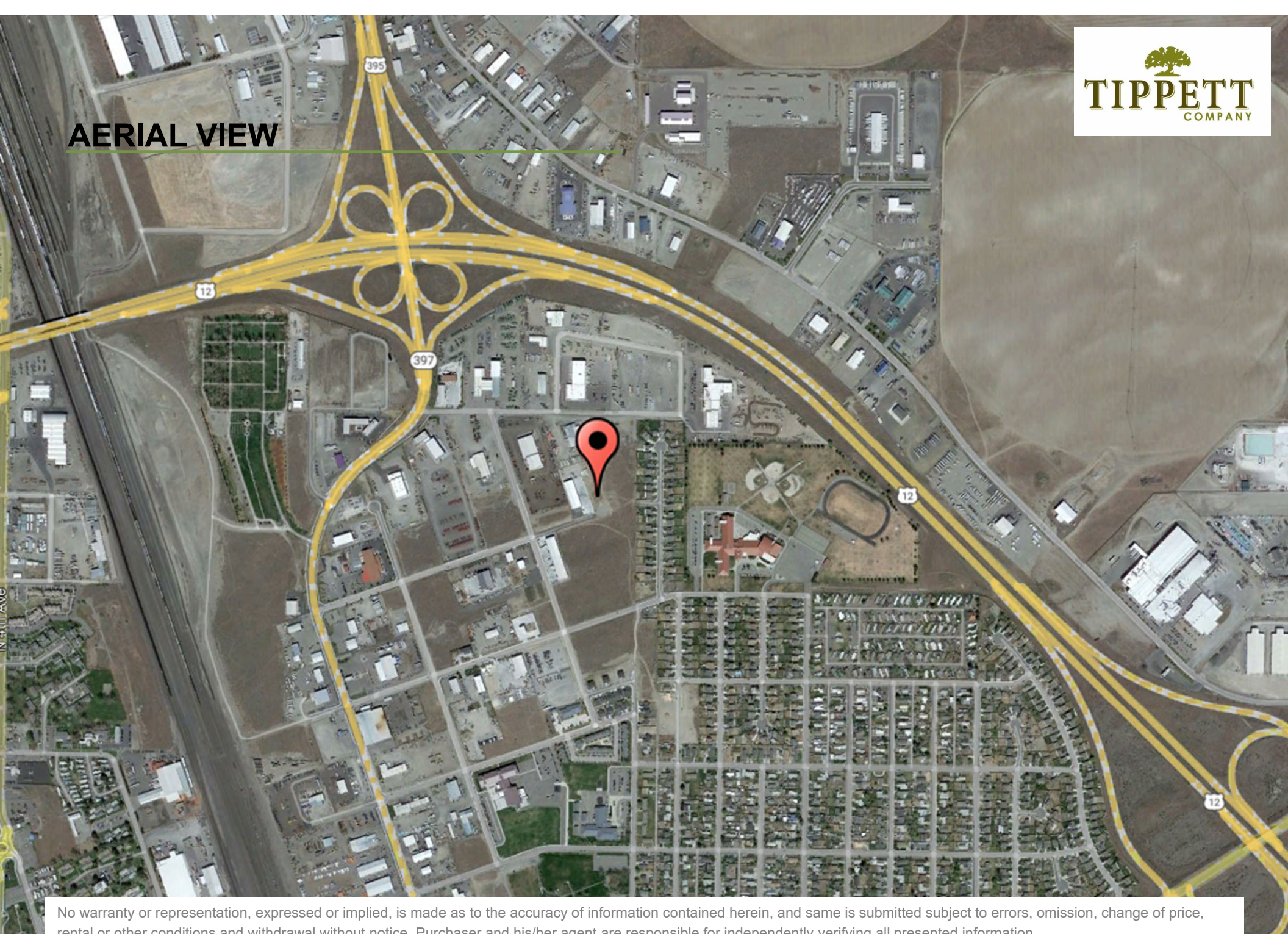
No warranty or representation, expressed or implied, is made as to the accuracy of information contained herein, and same is submitted subject to errors, omission, change of price, rental or other conditions and withdrawal without notice. Purchaser and his/her agent are responsible for independently verifying all presented information.

PHOTOS



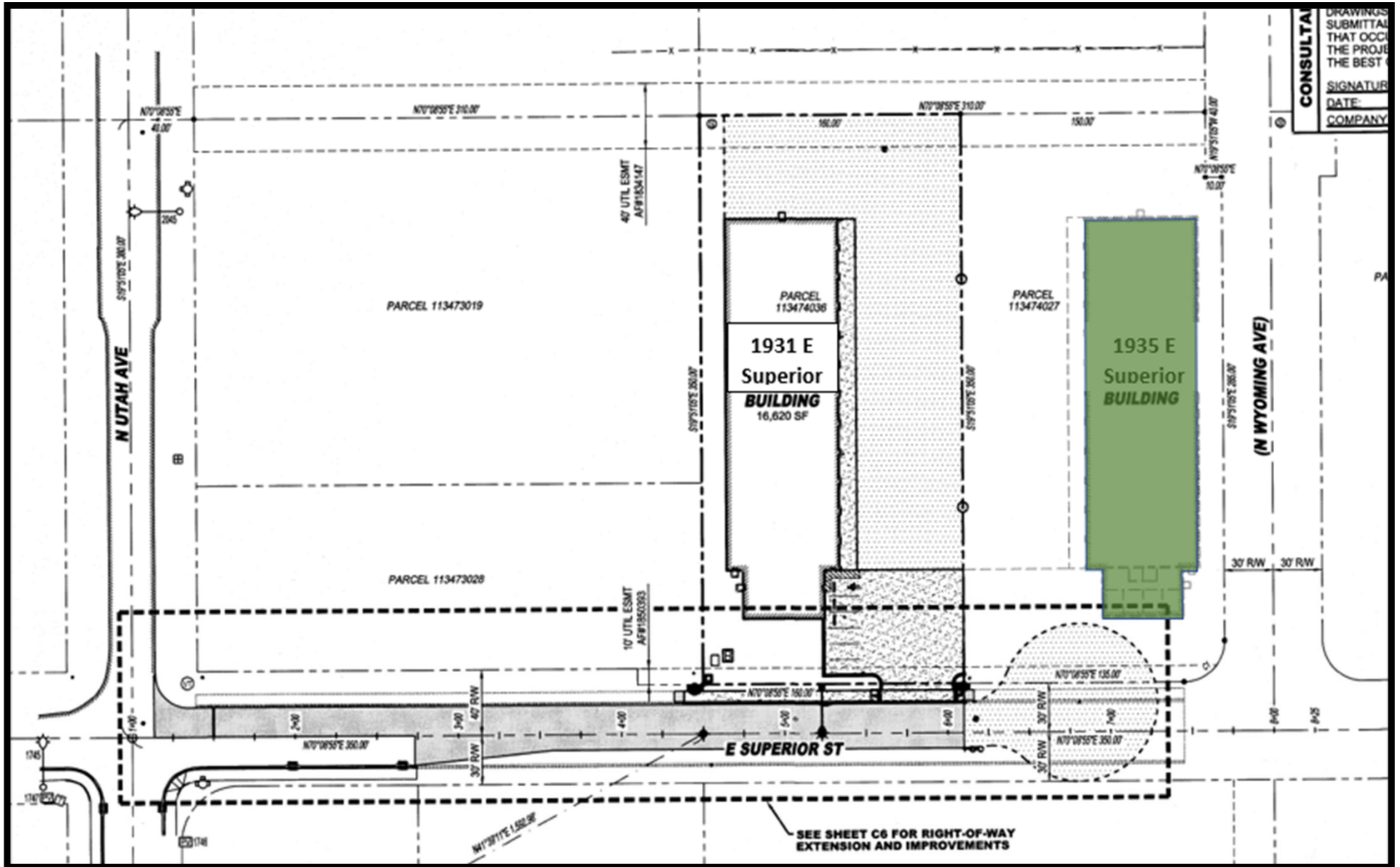
on contained herein and same is submitted subject to errors, omission, change of
for independently verifying all presented information.

AERIAL VIEW



No warranty or representation, expressed or implied, is made as to the accuracy of information contained herein, and same is submitted subject to errors, omission, change of price, rental or other conditions and withdrawal without notice. Purchaser and his/her agent are responsible for independently verifying all presented information.

SITE PLAN



No warranty or representation, expressed or implied, is made as to the accuracy of information contained herein, and same is submitted subject to errors, omission, change of price, rental or other conditions and withdrawal without notice. Purchaser and his/her agent are responsible for independently verifying all presented information.